

# MARK I

## PARTS & ACCESSORIES

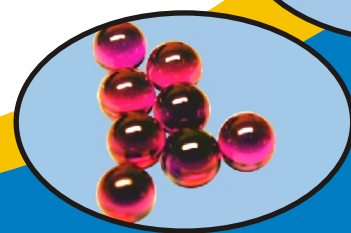
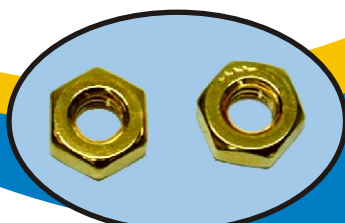
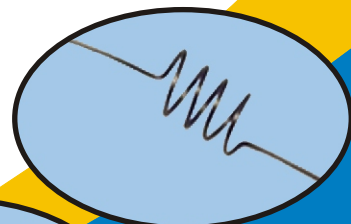
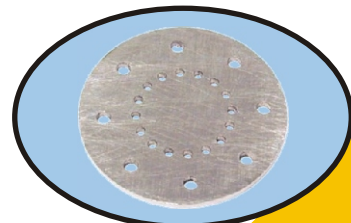
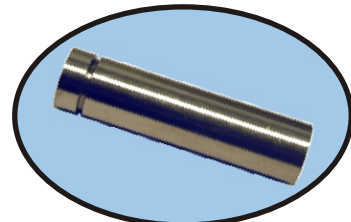
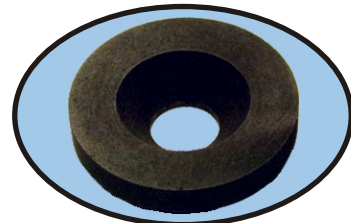
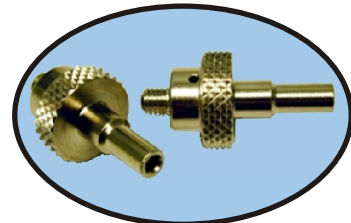
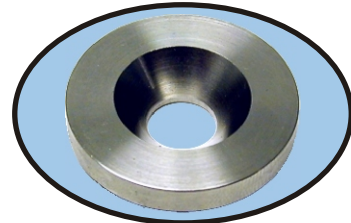
At Intlvac we understand the Mark I End-Hall Ion Sources so when you install our parts; materials, magnetic fields, and dimensions are equal to or better than the parts from the original manufacturer.

Intlvac parts are cleaned to high vacuum use straight out of the bag. Our large inventory of parts allows us to ship immediately around the world.

Look at pictures of our parts online at [www.intlvac.com/shop/](http://www.intlvac.com/shop/)

Veeco Part #	Intlvac Part #	Description
A30274	B41385	Cathode Filament
B18003-1	C29114-1	Graphite Anode
B18003-2	C29114-2	Stainless Steel Anode
B18005-1	C29116-1	Graphite Gas Distributor
B18005-3	C29116-3	Stainless Steel Gas Distributor
B18010	C29121	Hold Down Rod
B18012	C29123	Cathode Connector
B18013	C29124	Cathode Support
B18015	C29126	Tie Rod
B18019	C29120	Alnico-5 Magnet
1451001	1451001	Ruby Sapphire Insulators

**PLUS** Standoff Insulators (6-32M, 10-32M, 1/4-20M/F)  
Gold Plated Hardware (B17490-x)



905-873-0166  
[www.intlvac.com](http://www.intlvac.com)